



NUTRICELL® FULLAROM

100% organic source of assimilable nitrogen specifically formulated to provide yeast with the necessary nutrients for higher production of fermentation aromas



Significant production of aromas with neutral or diluted grapes

Good control of the alcoholic fermentation process



OENOLOGICAL GOALS

- Composed exclusively of yeast autolysates, selected inactivated yeasts and thiamine
- Thiamine: optimum yeast multiplication
- Autolysates and SIY release amino acids, as well as vitamins and trace elements necessary for the proper metabolism of yeast
- Provides a pool of amino acids, precursors to the formation of esters via the Ehrlich pathway, leading to the formation of higher alcohol acetates with pleasant fruity and floral notes
- Intensifies the aromatic potential of relatively neutral grape varieties, diluted grapes or grapes from high-yielding plots



DOSAGE

Recommended dose: 20 to 40 g/hL depending on the nutritional needs of the yeast and the assimilable nitrogen content of the must.

Maximum legal dose according to current European regulations: 40 g/hL.



PACKAGING



**1 KG
10 KG**



STORAGE

Store unopened, sealed packages away from light in a dry, odour-free environment.

Do not allow to freeze.

Once opened, use up rapidly.

The information provided here is based on our current state of knowledge. This information is non-binding and without guarantee, since the conditions of use are beyond our control. It does not release the user from complying with existing legislation and safety data. This document is the property of SOFRALAB and may not be modified without its consent.



INSTRUCTIONS FOR USE

Disperse **NUTRICELL® FULLAROM** in 10 times its weight in water or must (1kg per 10L).

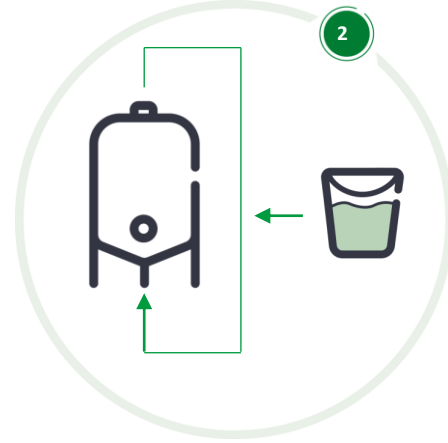


Pre-dilution and homogenisation



Homogenise well!
Add to must when yeasting

Incorporation



Add to the tank when yeasting

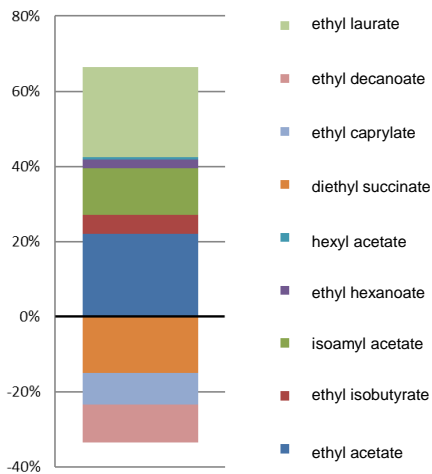
Precautions for use:

Product for oenological and specifically professional use.
Use in accordance with current regulations.

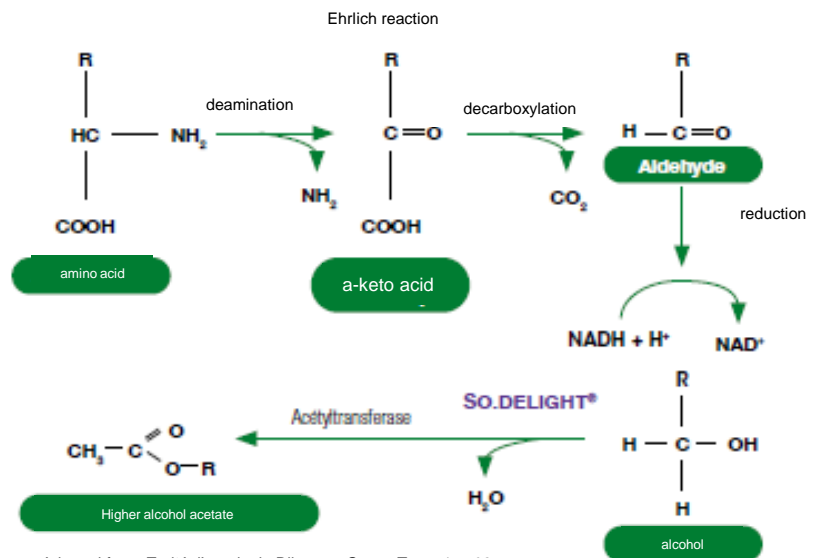


EXAMPLE OF IMPACT ON ESTER COMPOSITION AFTER ADDITION OF NUTRICELL® FULLAROM

Variation compared to control



White wine - Loire Valley



Adapted from: Traité d'œnologie Ribereau Gayon Tome 1 p. 92